

23

CHEMOTHERAPY
TREATMENT CHAIRS



26 ASSESSMENT AND
TREATMENT ROOMS

57,624
OUTPATIENT VISITS

26,015
RADIATION FRACTIONS

12 COUNSELLING
ROOMS

10,078

CHEMOTHERAPY
& SUPPORTIVE
TREATMENT
VISITS

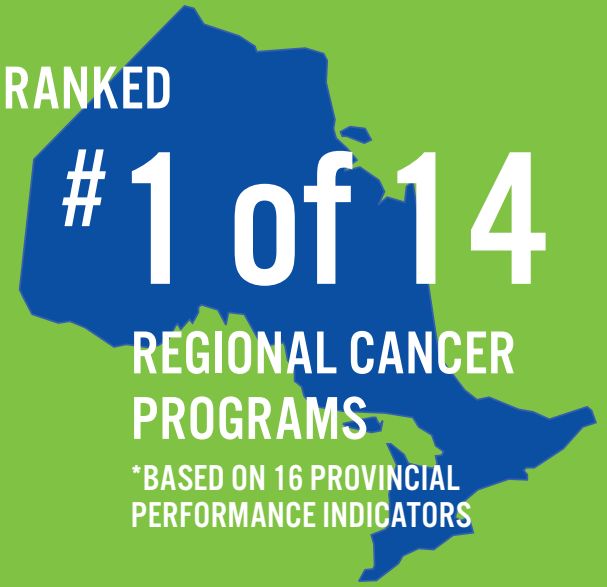


RANKED

#1 of 14

REGIONAL CANCER
PROGRAMS

*BASED ON 16 PROVINCIAL
PERFORMANCE INDICATORS



STRONACH REGIONAL CANCER CENTRE

2015/16 VITAL SIGNS

160



FRONT LINE, MANAGEMENT,
AND ADMINISTRATIVE STAFF

4

 PALLIATIVE CARE PHYSICIAN
SPECIALISTS

1

 PSYCHOSOCIAL ONCOLOGY
PSYCHIATRIST

4

 NURSE PRACTITIONERS

1

 MEDICAL PSYCHOTHERAPIST

4

 LINEAR ACCELERATORS

PROVINCIAL LEADER IN
INTERPROFESSIONAL PEER
REVIEW



100%

 COMPLIANCE WITH
COMPUTER
PHYSICIAN ORDER
ENTRY

99%

 PATIENT SATISFACTION

CAPACITY FOR

6

 RADIATION
BUNKERS

120

 VOLUNTEERS
(WITH OVER 12,500
HOURS SERVED)

7

 RADIATION
ONCOLOGISTS

8

 MEDICAL
ONCOLOGISTS